

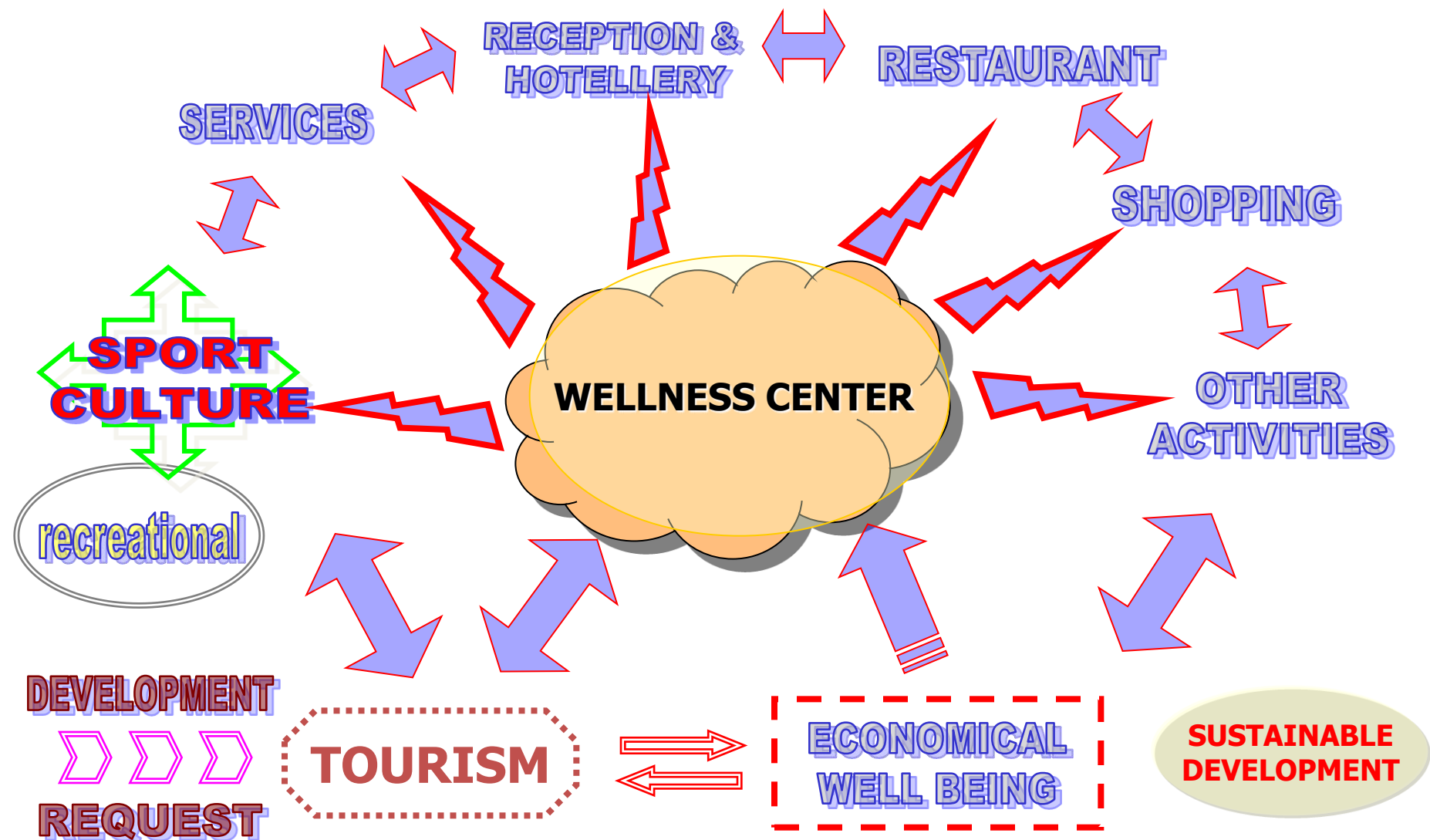
# FEMTEC INTERNATIONAL TRAINING CENTER

March 20, 2015 - MOSCOW

## MODERN ASPECTS OF TECHNOLOGY AND MANAGEMENT FOR SPA AND WELLNESS INDUSTRY

by Giovanni Gurnari  
Vice President of FEMTEC

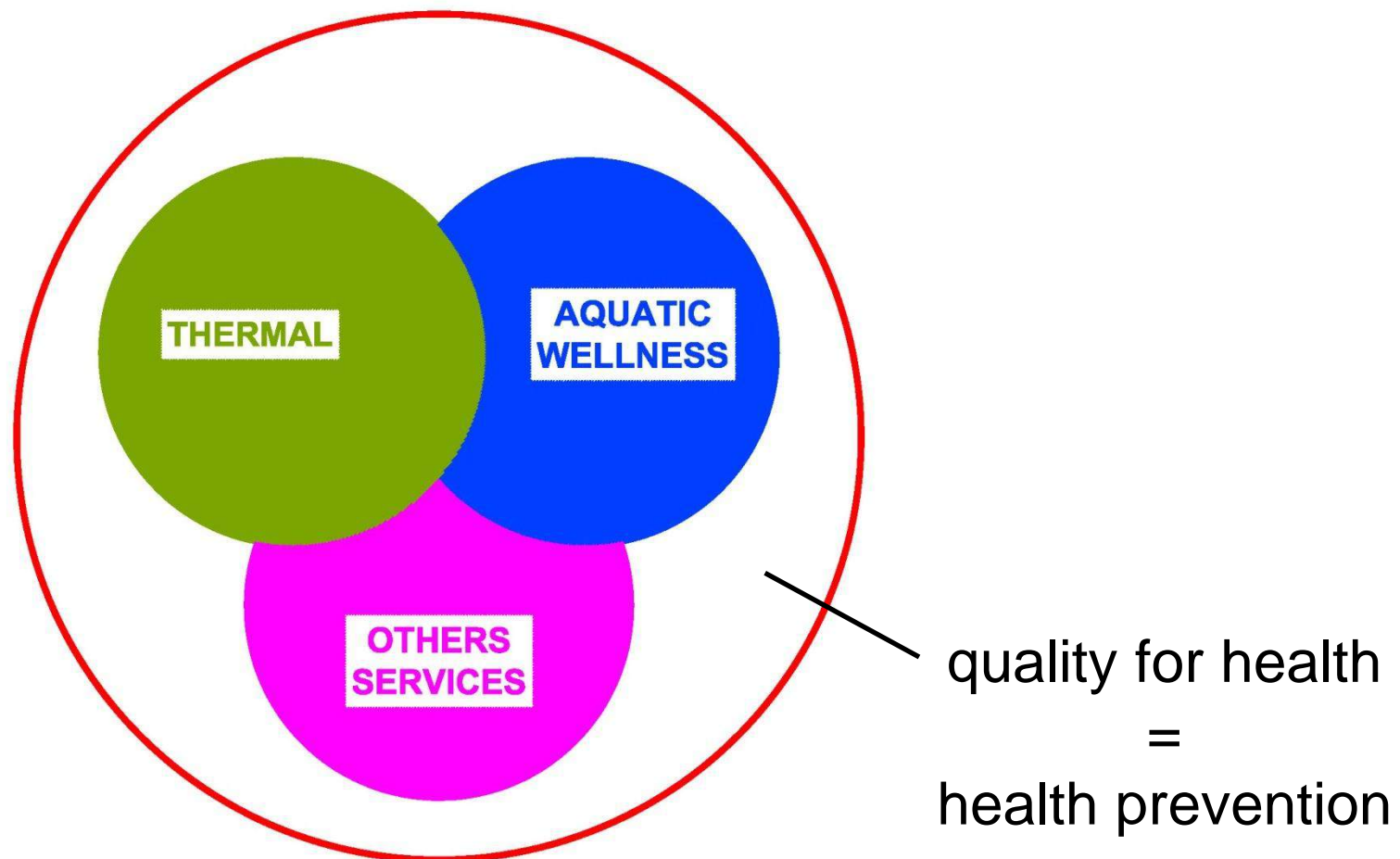








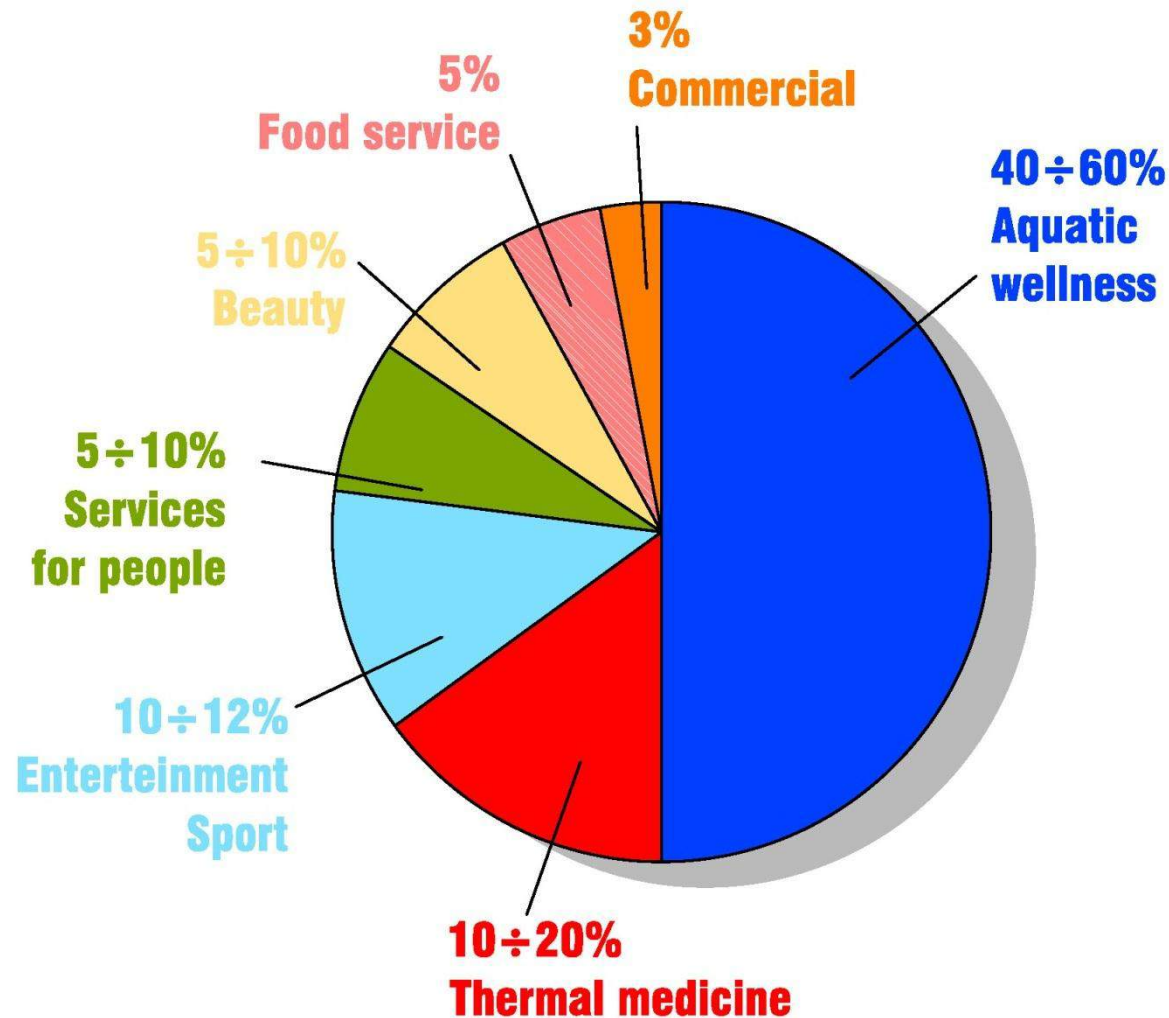
## *For a future of the Health Tourism*







## *Concept for a quality wellness facility*







**VERY HIGH ATTENTION  
FOR THE DETAILS**

**STRATEGICAL EFFORT FOR  
ENGINEERING COMPONENTS**

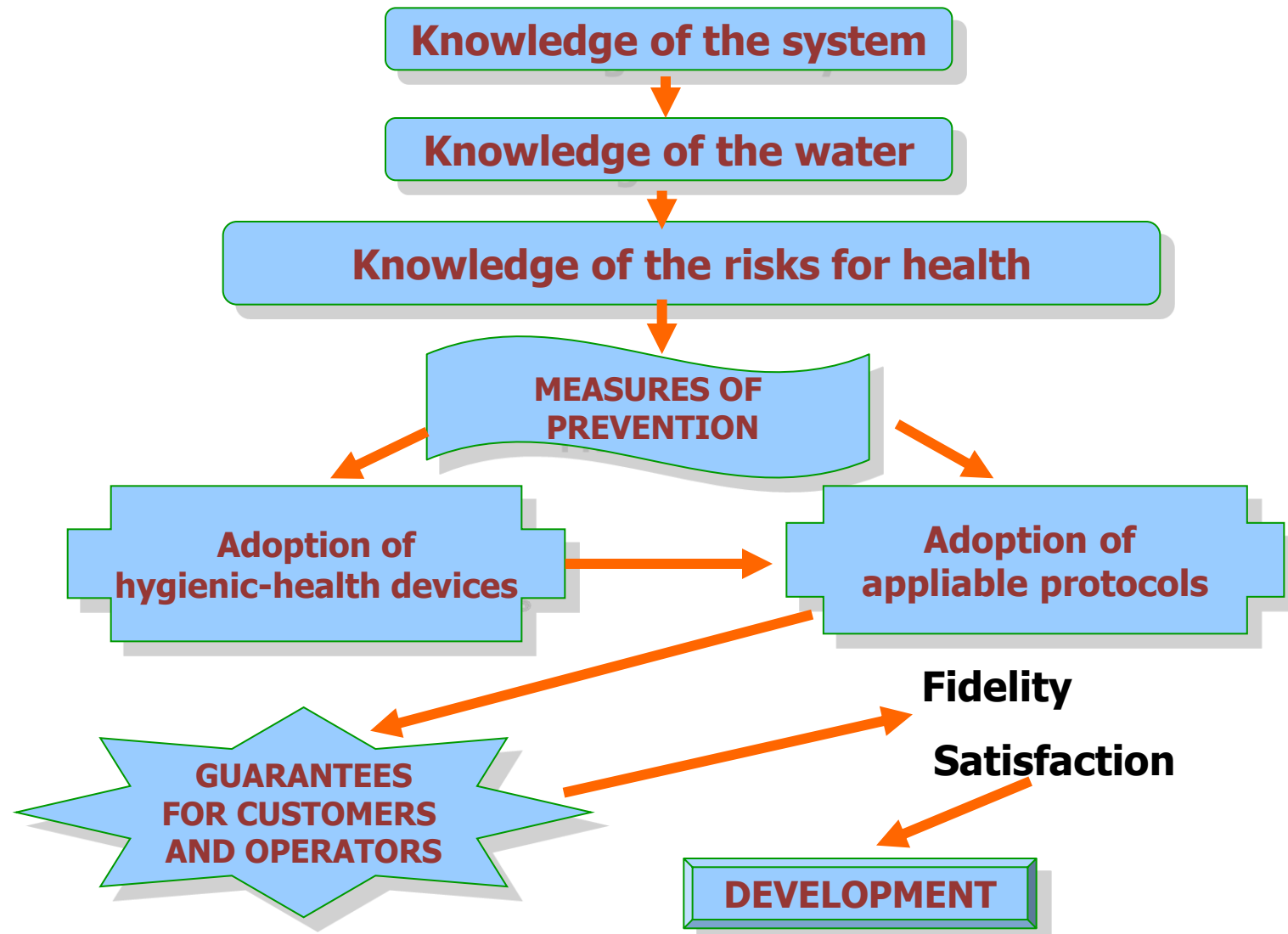
**SPECIFIC EXPERTISE TO  
CHOOSE FACILITIES, DEVICES  
AND FUNCTIONS**

**PROFESSIONAL PROTOCOLS IN  
HYGIENIC AND HEALTHY  
PREVENTION**

**POLICY FOR RISK ASSESSMENT  
MANAGEMENT RISK WITH A  
NICE APPLICATION**

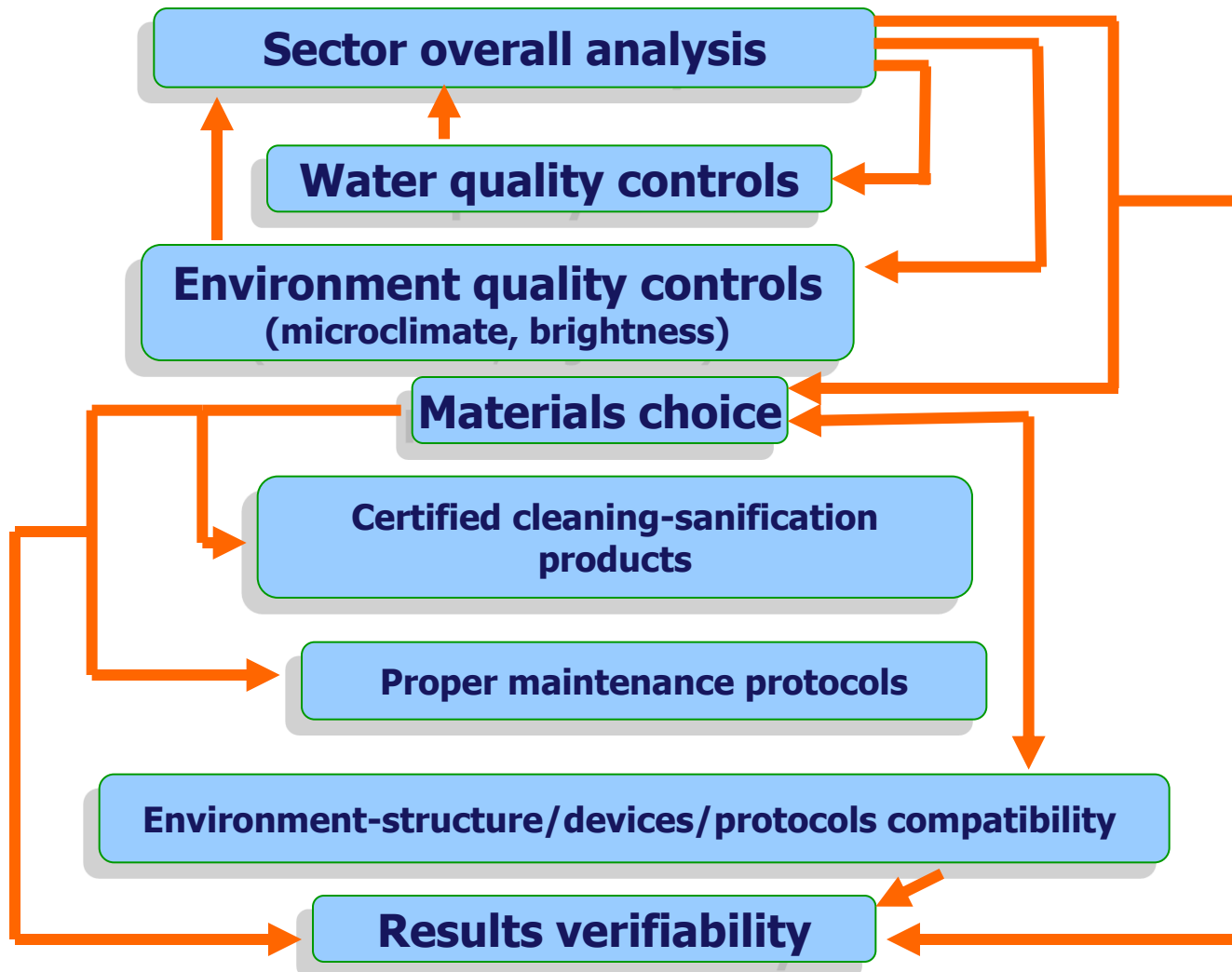


## *Some factors for a good management*















**SUPERFICI UTILIZZATE:**





**CENTRO BENESSERE**

● 10 + 15 min.  
 ● 15 min.  
 ● 15 + 20 min.

dopo ● passare a ● relax per 10 ~ 20 min.

**Legenda:**

- Sanitario
- Fisioterapico
- Benessere
- Complementi di Benessere
- Beauty
- Fitness

**BENAQUUM SH**  
ENGINEERING & SUPPLIES

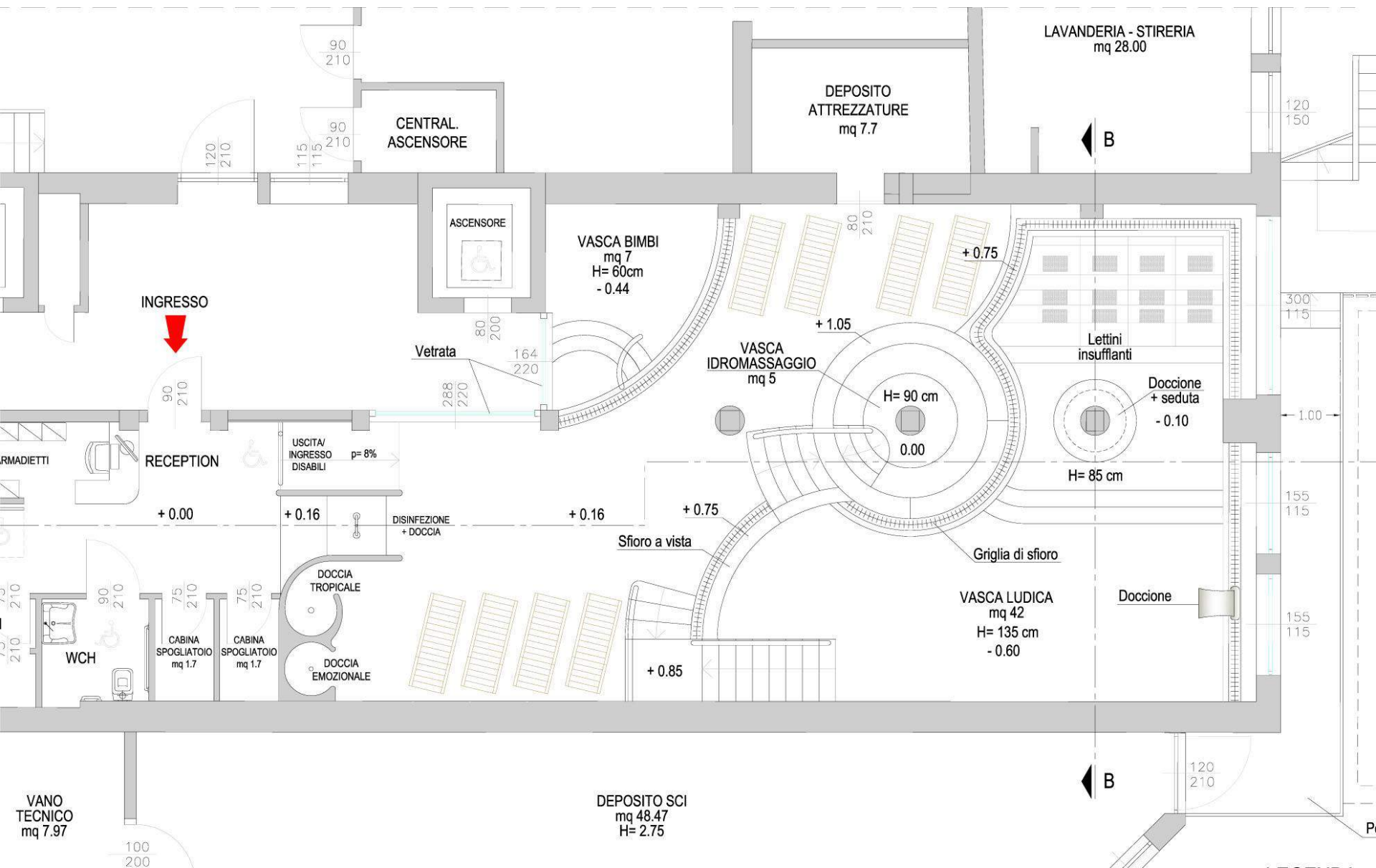
Tratta negli impianti: SIDA/4/5/6/7/8/9/10/11/12/13/14/15/16/17/18/19/20/21/22/23/24/25/26/27/28/29/30/31/32/33/34/35/36/37/38/39/40/41/42/43/44/45/46/47/48/49/50/51/52/53/54/55/56/57/58/59/60/61/62/63/64/65/66/67/68/69/70/71/72/73/74/75/76/77/78/79/80/81/82/83/84/85/86/87/88/89/90/91/92/93/94/95/96/97/98/99/100/101/102/103/104/105/106/107/108/109/110/111/112/113/114/115/116/117/118/119/120/121/122/123/124/125/126/127/128/129/130/131/132/133/134/135/136/137/138/139/140/141/142/143/144/145/146/147/148/149/150/151/152/153/154/155/156/157/158/159/160/161/162/163/164/165/166/167/168/169/170/171/172/173/174/175/176/177/178/179/180/181/182/183/184/185/186/187/188/189/190/191/192/193/194/195/196/197/198/199/200/201/202/203/204/205/206/207/208/209/210/211/212/213/214/215/216/217/218/219/220/221/222/223/224/225/226/227/228/229/230/231/232/233/234/235/236/237/238/239/240/241/242/243/244/245/246/247/248/249/250/251/252/253/254/255/256/257/258/259/260/261/262/263/264/265/266/267/268/269/270/271/272/273/274/275/276/277/278/279/280/281/282/283/284/285/286/287/288/289/290/291/292/293/294/295/296/297/298/299/300/301/302/303/304/305/306/307/308/309/310/311/312/313/314/315/316/317/318/319/320/321/322/323/324/325/326/327/328/329/330/331/332/333/334/335/336/337/338/339/340/341/342/343/344/345/346/347/348/349/350/351/352/353/354/355/356/357/358/359/360/361/362/363/364/365/366/367/368/369/370/371/372/373/374/375/376/377/378/379/380/381/382/383/384/385/386/387/388/389/390/391/392/393/394/395/396/397/398/399/400/401/402/403/404/405/406/407/408/409/410/411/412/413/414/415/416/417/418/419/420/421/422/423/424/425/426/427/428/429/430/431/432/433/434/435/436/437/438/439/440/441/442/443/444/445/446/447/448/449/450/451/452/453/454/455/456/457/458/459/460/461/462/463/464/465/466/467/468/469/470/471/472/473/474/475/476/477/478/479/480/481/482/483/484/485/486/487/488/489/490/491/492/493/494/495/496/497/498/499/500/501/502/503/504/505/506/507/508/509/510/511/512/513/514/515/516/517/518/519/520/521/522/523/524/525/526/527/528/529/530/531/532/533/534/535/536/537/538/539/540/541/542/543/544/545/546/547/548/549/550/551/552/553/554/555/556/557/558/559/560/561/562/563/564/565/566/567/568/569/570/571/572/573/574/575/576/577/578/579/580/581/582/583/584/585/586/587/588/589/590/591/592/593/594/595/596/597/598/599/600/601/602/603/604/605/606/607/608/609/610/611/612/613/614/615/616/617/618/619/620/621/622/623/624/625/626/627/628/629/630/631/632/633/634/635/636/637/638/639/640/641/642/643/644/645/646/647/648/649/650/651/652/653/654/655/656/657/658/659/660/661/662/663/664/665/666/667/668/669/670/671/672/673/674/675/676/677/678/679/680/681/682/683/684/685/686/687/688/689/690/691/692/693/694/695/696/697/698/699/700/701/702/703/704/705/706/707/708/709/710/711/712/713/714/715/716/717/718/719/720/721/722/723/724/725/726/727/728/729/730/731/732/733/734/735/736/737/738/739/740/741/742/743/744/745/746/747/748/749/750/751/752/753/754/755/756/757/758/759/760/761/762/763/764/765/766/767/768/769/770/771/772/773/774/775/776/777/778/779/780/781/782/783/784/785/786/787/788/789/790/791/792/793/794/795/796/797/798/799/800/801/802/803/804/805/806/807/808/809/810/811/812/813/814/815/816/817/818/819/820/821/822/823/824/825/826/827/828/829/830/831/832/833/834/835/836/837/838/839/840/841/842/843/844/845/846/847/848/849/850/851/852/853/854/855/856/857/858/859/860/861/862/863/864/865/866/867/868/869/870/871/872/873/874/875/876/877/878/879/880/881/882/883/884/885/886/887/888/889/890/891/892/893/894/895/896/897/898/899/900/901/902/903/904/905/906/907/908/909/910/911/912/913/914/915/916/917/918/919/920/921/922/923/924/925/926/927/928/929/930/931/932/933/934/935/936/937/938/939/940/941/942/943/944/945/946/947/948/949/950/951/952/953/954/955/956/957/958/959/960/961/962/963/964/965/966/967/968/969/970/971/972/973/974/975/976/977/978/979/980/981/982/983/984/98

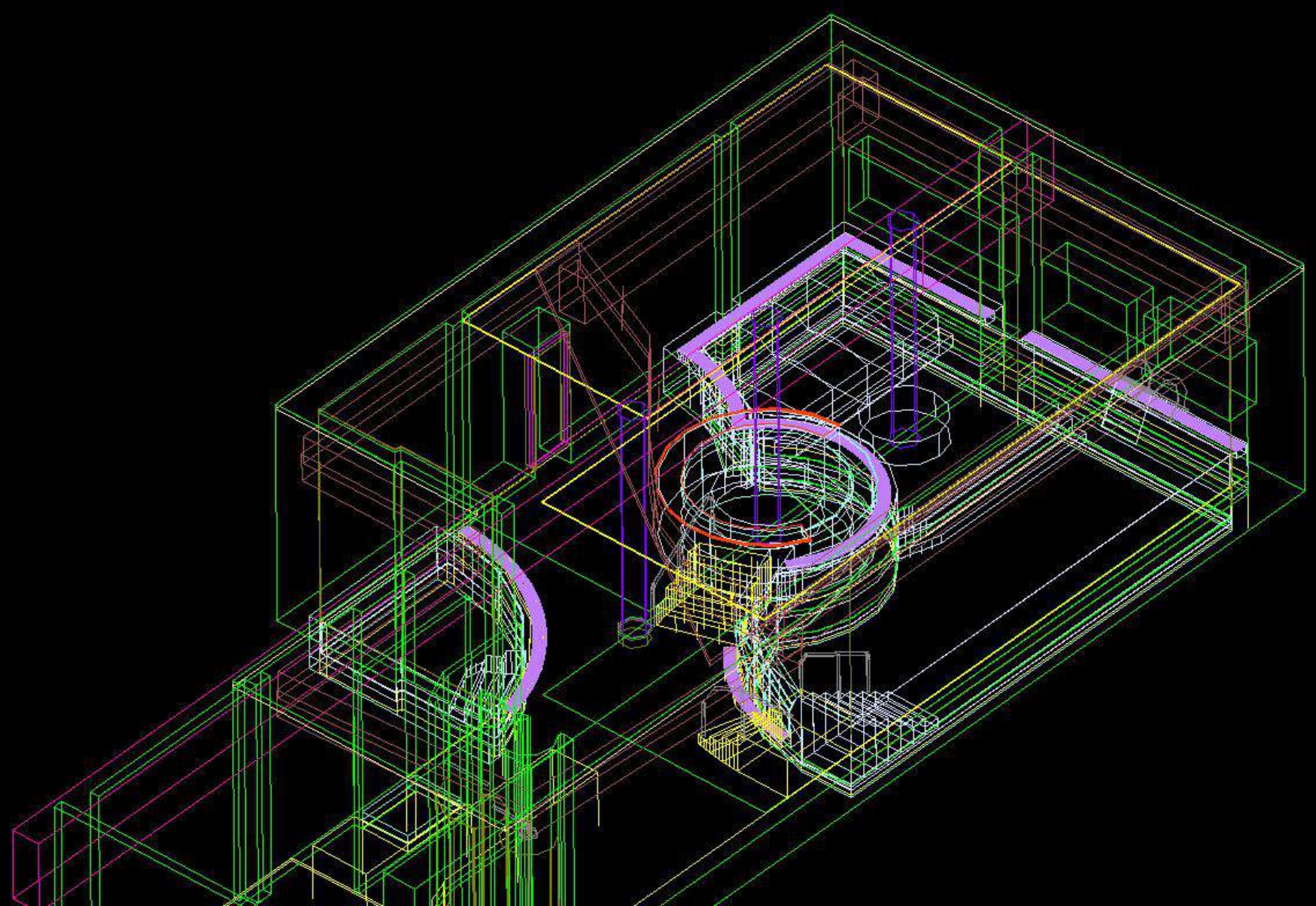


## CATEZ, Slovenia

















## AQUA DOME, Austria

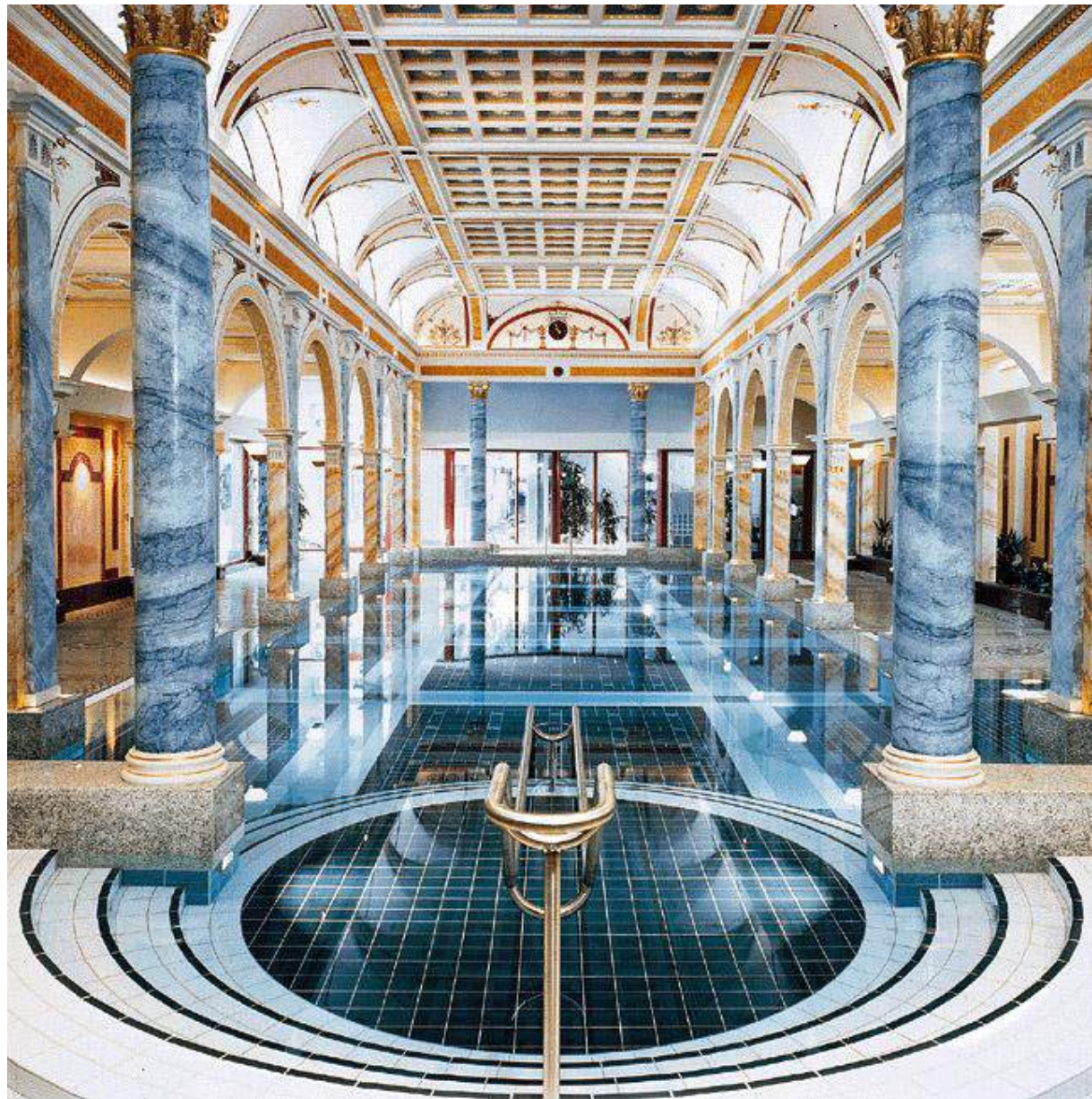


## *Some elements for Health Tourism*



*\* Elements inspired by criteria of thermal sector*





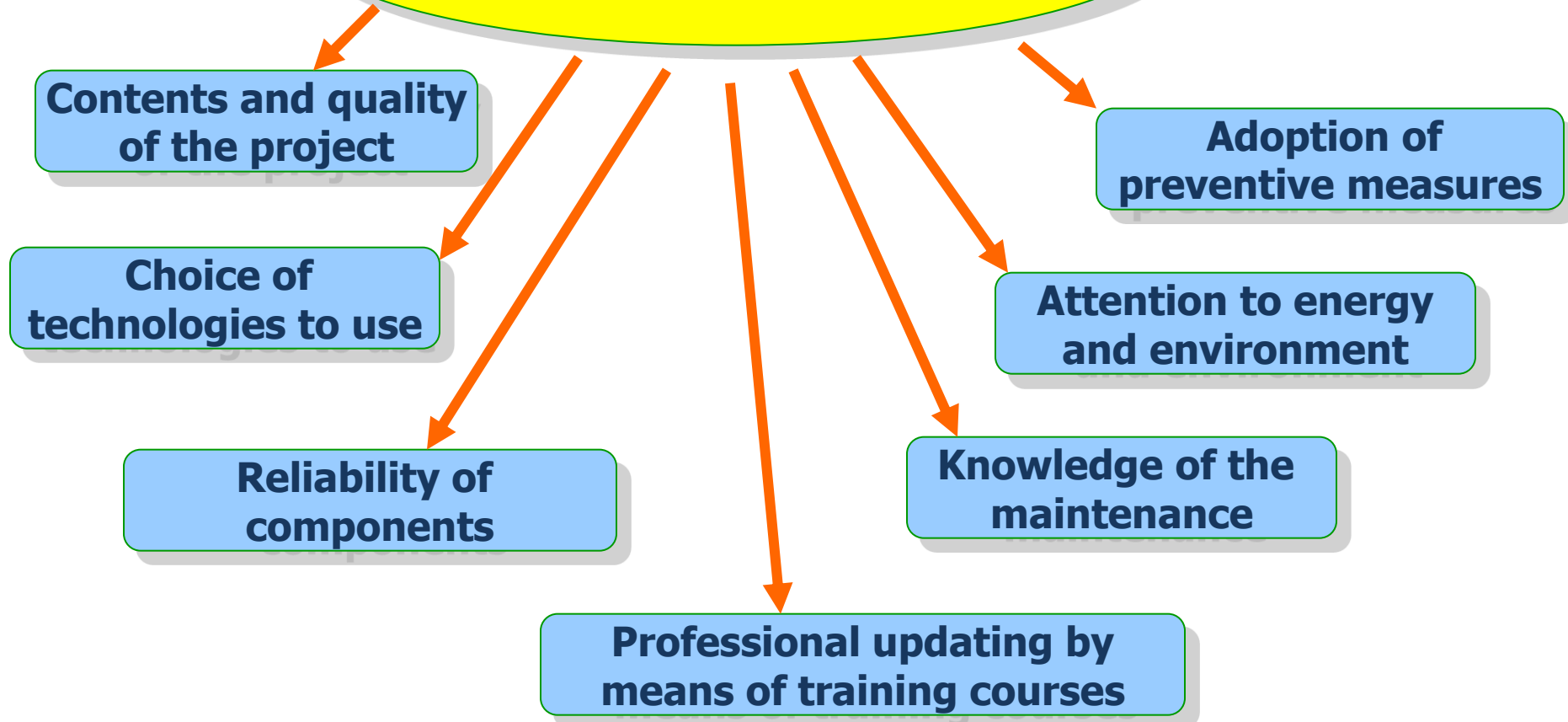


## CAROLUS, Germany



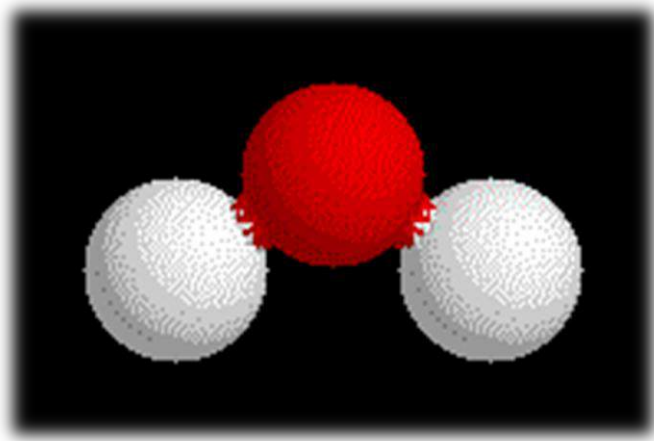


# **The final quality depends on:**









**WATER**  
**(warm)**

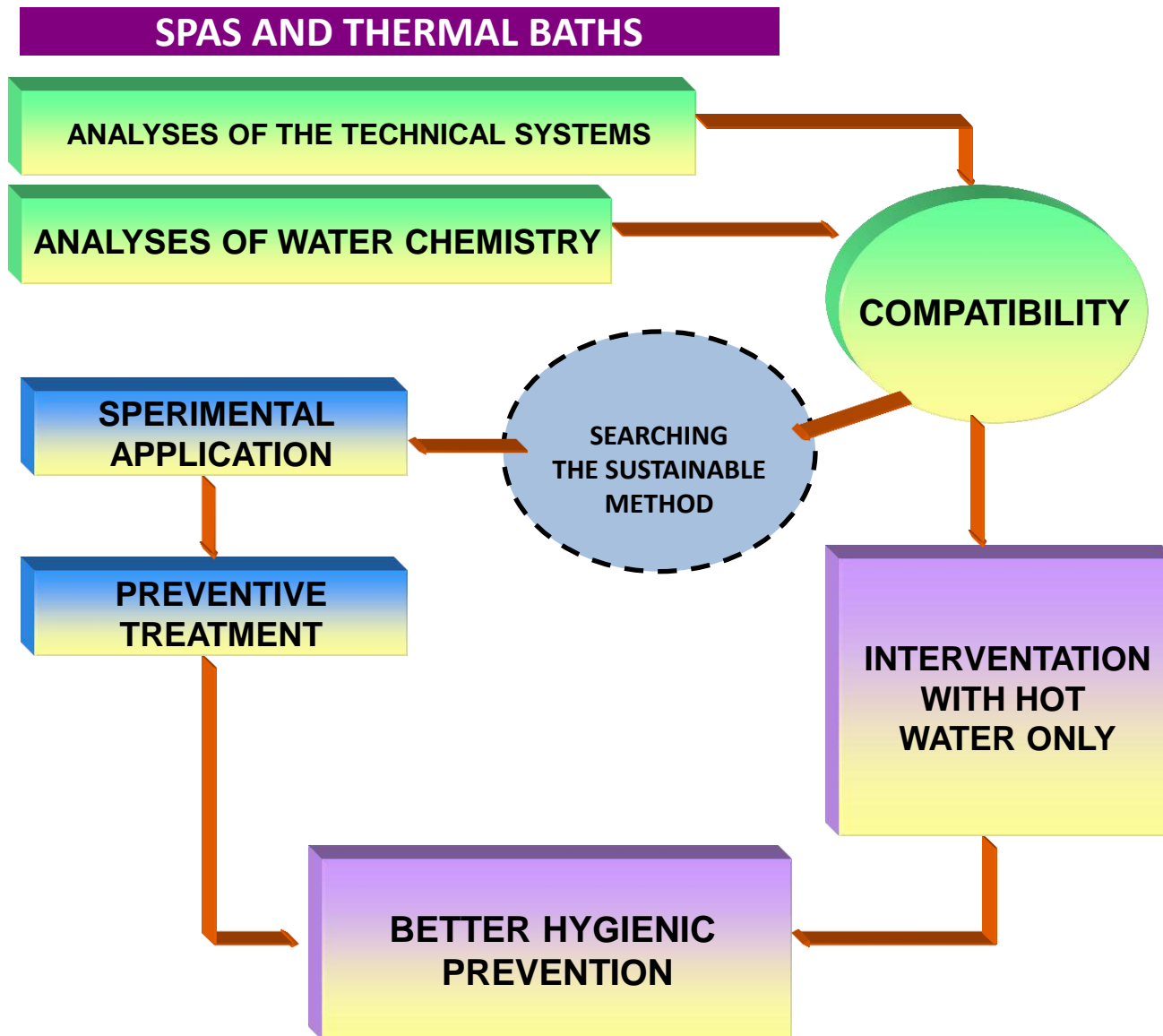
**Doesn't like**

- Metals
- Electricity and electromagnetic fields
- Square or mitred forms
- Alteration of its natural ionic balance
- Excess of oxygen





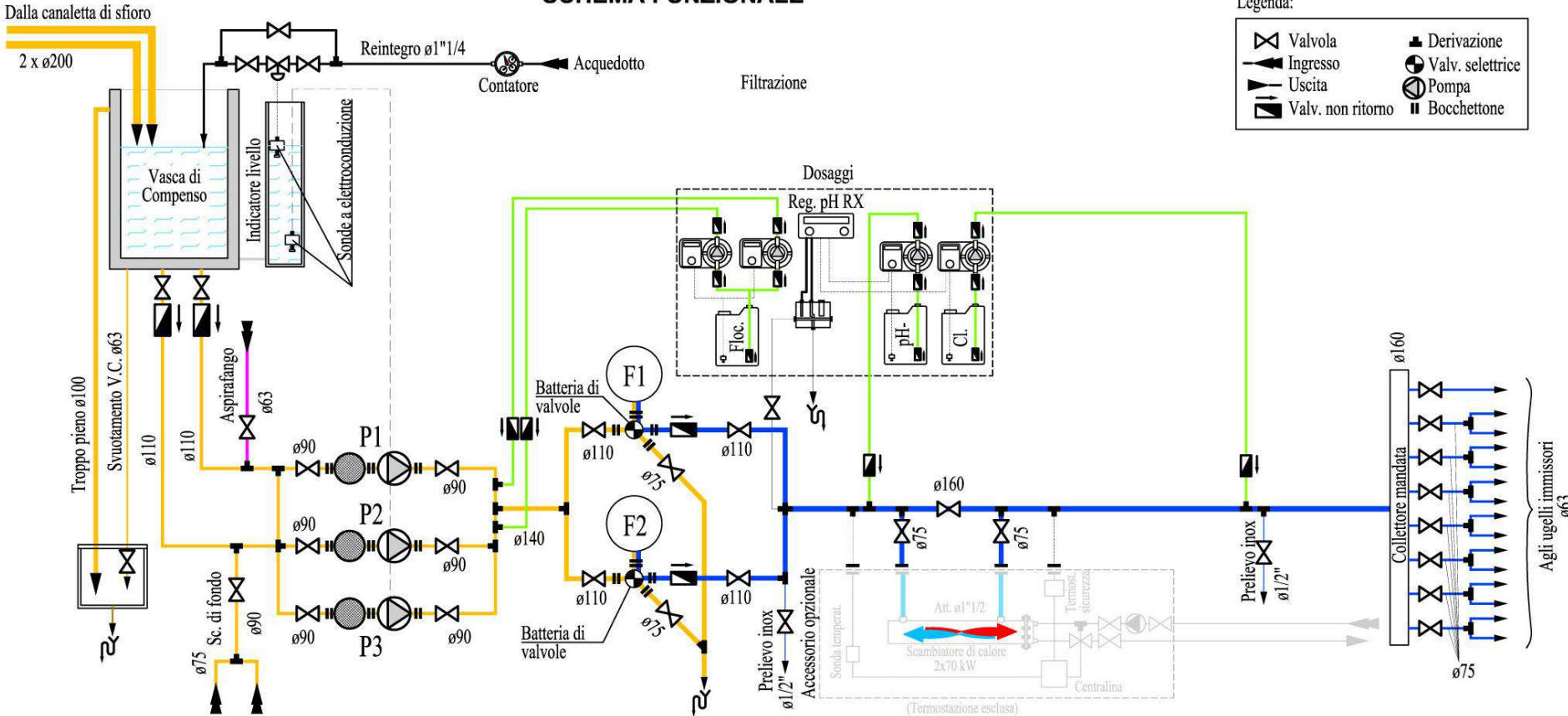




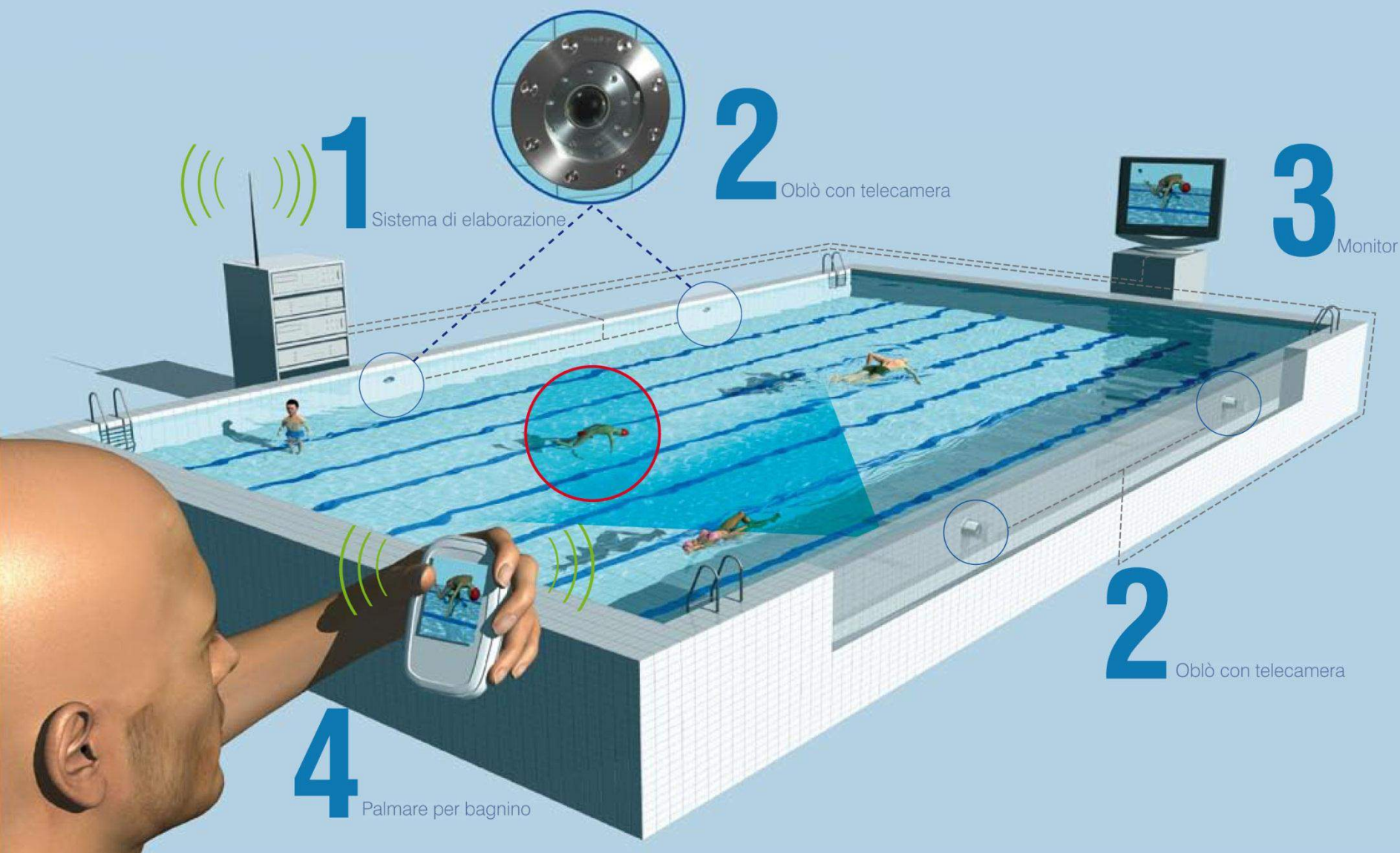




SCHEMA FUNZIONALE



AngelEye LifeGuard

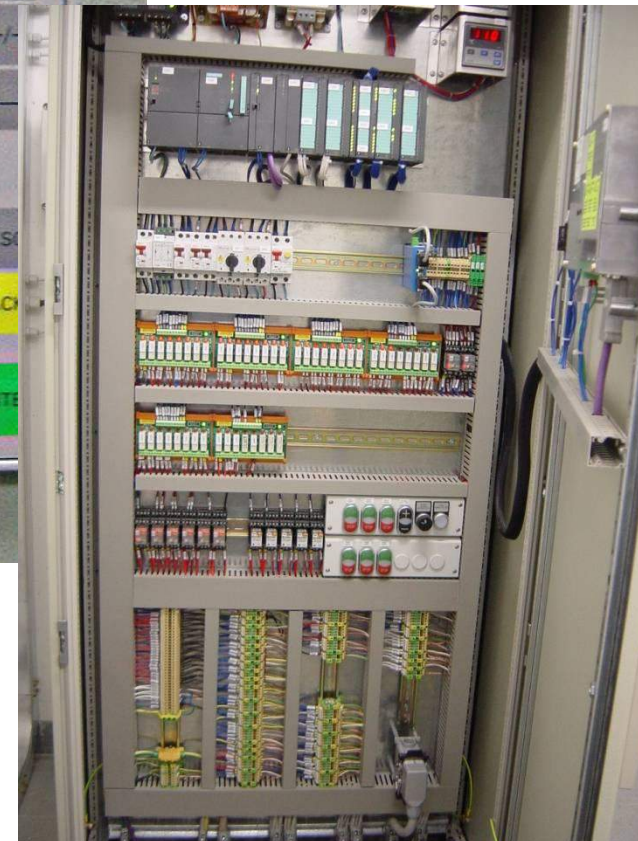












*Advanced remote control systems*



## *Air and water treatment*



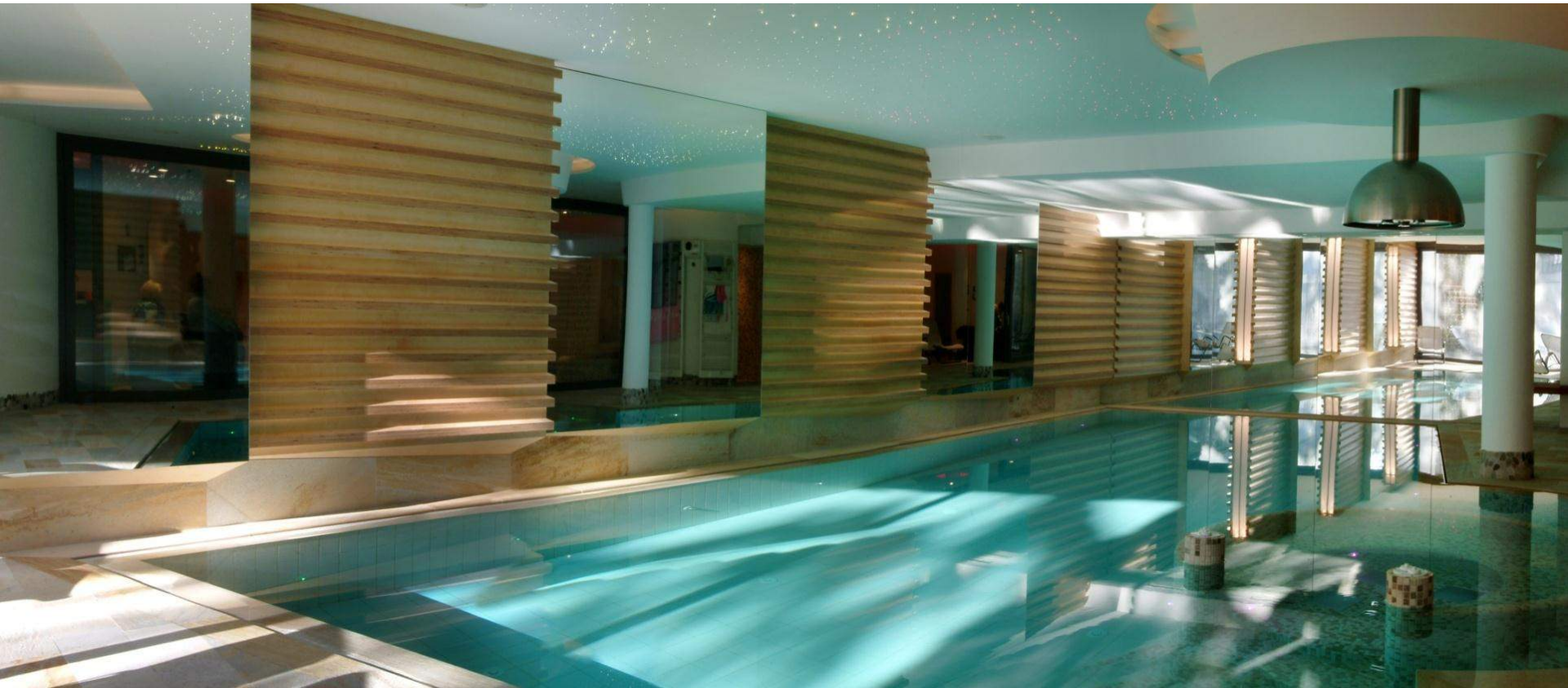


## *New technical rooms*





## *Harmony of shapes*





**STRATEGIC AXIOM**

**THE BEST ATTENTION IN  
TECHNICAL APPLICATION**



**BETTER CONTROL  
=  
BETTER KNOWLEDGE**

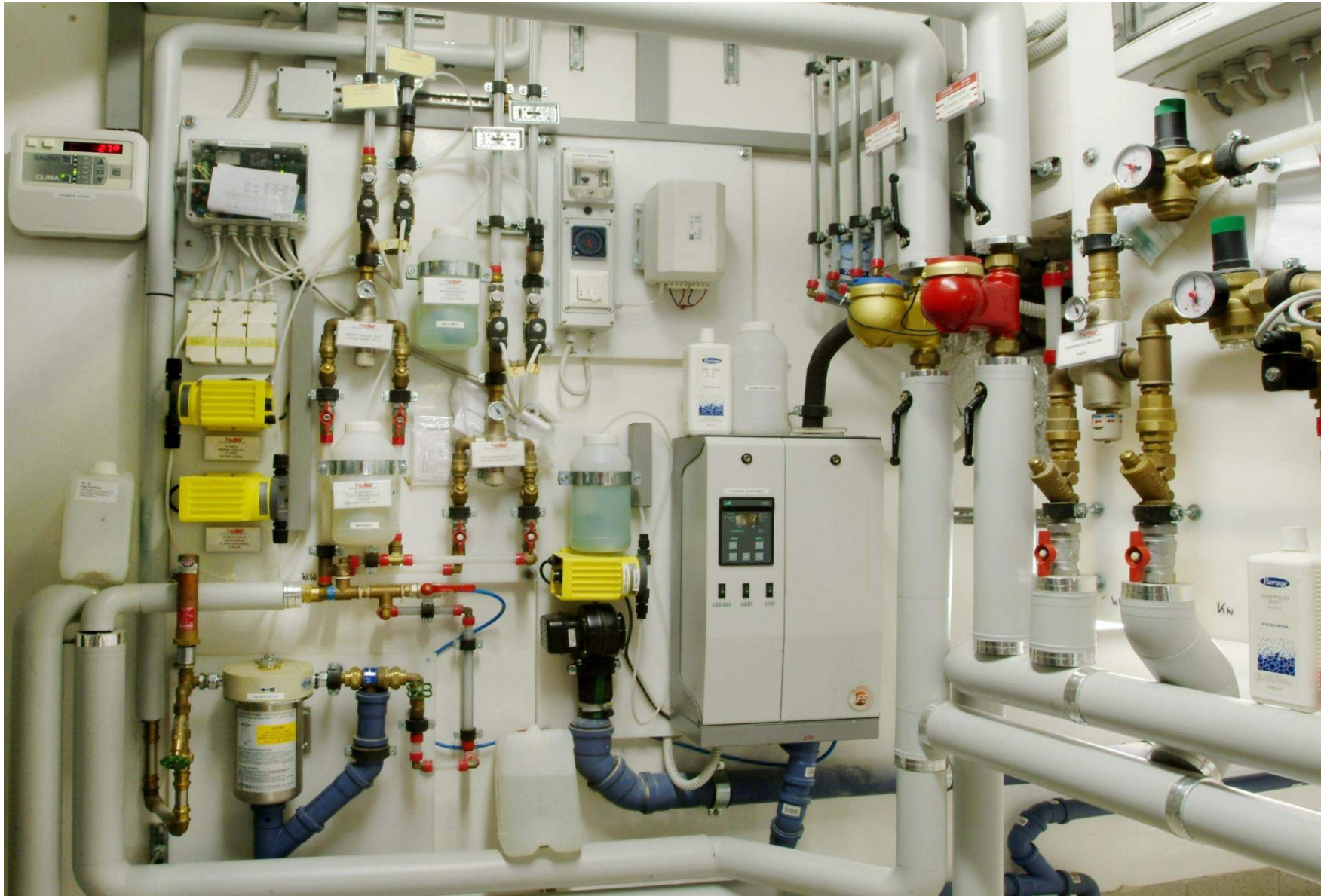


**SIGNIFICANT ACTIONS THROUGH  
THE GEOTHERMAL RESOURCE**



**BEST PERFORMANCES AND  
ENVIRONMENTAL PROTECTION**

## *New control systems*





## *Old materials*





*New polymeric materials*

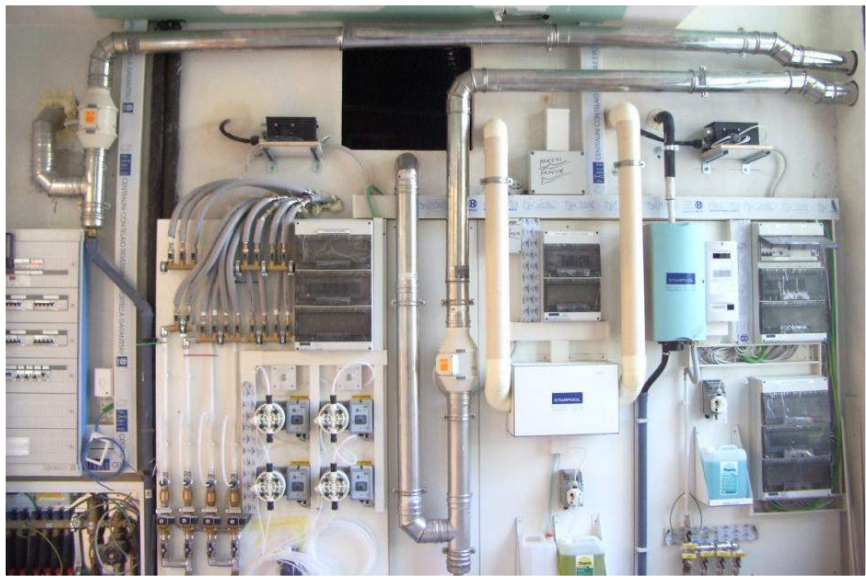




## *Modern devices*













## *New systems for hygienic risk prevention*

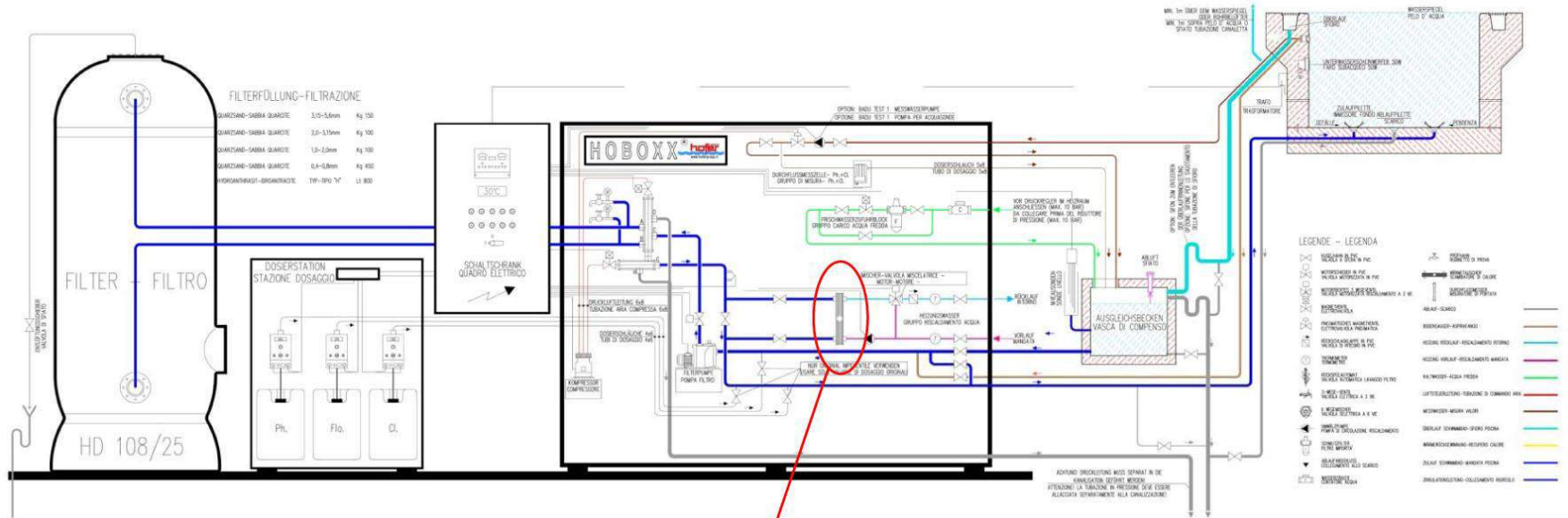




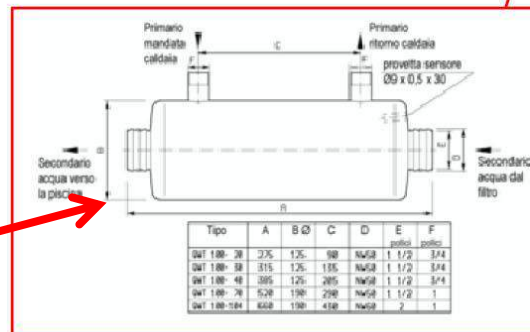




*Energy saving: compact technology all integrated*



## Multitubular







## *Energy saving: LED lighting*



- **Long life** (10 times longer than the average life of an incandescent bulb Energy Saver)
- **Low energy consumption** (1/15th of an incandescent bulb with same power)
- **Consumptions cutting** (almost 70%)



## Protocols for maintenance

pag. 20 di 44

### *Programma di manutenzione meccanica*

Descrizione	All'avviamento iniziale e/o dopo il periodo di fermata stagionale	Mensile	Semestrale	Ad ogni fermata	Annuale
Verifica condizioni generali dell'impianto	•			•	•
Verifica presenza di sporcizia nella sezione di scambio	•		•		
Verifica distribuzione acqua	•		•		
Verifica pulizia e corretta installazione dei separatori di gocce	•		•		
Ispezione vasca di raccolta	•		•		
Controllo e regolazione del livello acqua nella vasca e del reintegro	•		•		
Controllo del dispositivo di dosaggio dei prodotti chimici	•	•			
Controllo corretto funzionamento dello spurgo	•	•			
Controllo corretto funzionamento della resistenza elettrica nella vasca di raccolta	•		•		
Pulizia filtro vasca	•		•		
Svuotamento vasca e tubazioni				•	

### *Parametri di controllo della qualità dell'acqua*

Tipo di parametro	Valore richiesto
Carica Batterica Totale dell'acqua in circolo	Non superiore a 10 <sup>6</sup> cfu/l
<i>Legionella Pneumophila</i>	Non superiore a 10 <sup>4</sup> cfu/l
PH dell'acqua in circolo	Compreso fra 7 e 9
Durezza dell'acqua in circolo	< 50 °F < 500 mg/l di C.C.O.
Altri parametri (cloruri, solfati e conduttività)	Secondo le specifiche dell'impianto o le raccomandazioni dell'addetto al trattamento dell'acqua

### *Manutenzione e assistenza*

Attività	Momento di esecuzione
Manutenzione della torre di raffreddamento	Secondo le raccomandazioni del costruttore
Manutenzione dell'impianto di trattamento dell'acqua	A cura dell'addetto al trattamento dell'acqua o secondo le istruzioni del fornitore
Pulizia e disinfezione dell'impianto	Prima dell'avviamento, annualmente, dopo uno spegnimento per più di un mese Se la Carica Batterica Totale è superiore a 10 <sup>6</sup> cfu/l Se la concentrazione di LP è superiore a 10 <sup>6</sup> cfu/l Se si osserva una crescita eccessiva di materiale organico

Scheda tecnica-rev.3.1.doc

**BENAGUAM Srl** - Strada degli Angariari 25/7 A, 47891 Falciano, RSM  
Tel. 0549 909778 - Fax 0549 972180 - Cod. Op. Ec. SM 19278  
Web site: [www.benaguam.com](http://www.benaguam.com) - E-mail: [info@benaguam.com](mailto:info@benaguam.com)



### Registro bordo macchina

AUSL RN - Ospedale di ..... N.

CENTRALE .....

Sottocentrale .....

N.

APPARATO.....

DISPOSITIVO/ORGANO.....

[illegible]

\* C= Controllo/verifica M= Manutenzione ordinaria S= manutenzione Straordinaria

Al ISI RN - Valutazione del rischio di contaminazione batteriologica nei dispositivi e nelle reti sanitarie Pan 77





**BENAQUAM** Srl  
ENGINEERING & SUPPLIES





## *Mud treatment cabin*





**BENAQUAM** Srl  
ENGINEERING & SUPPLIES





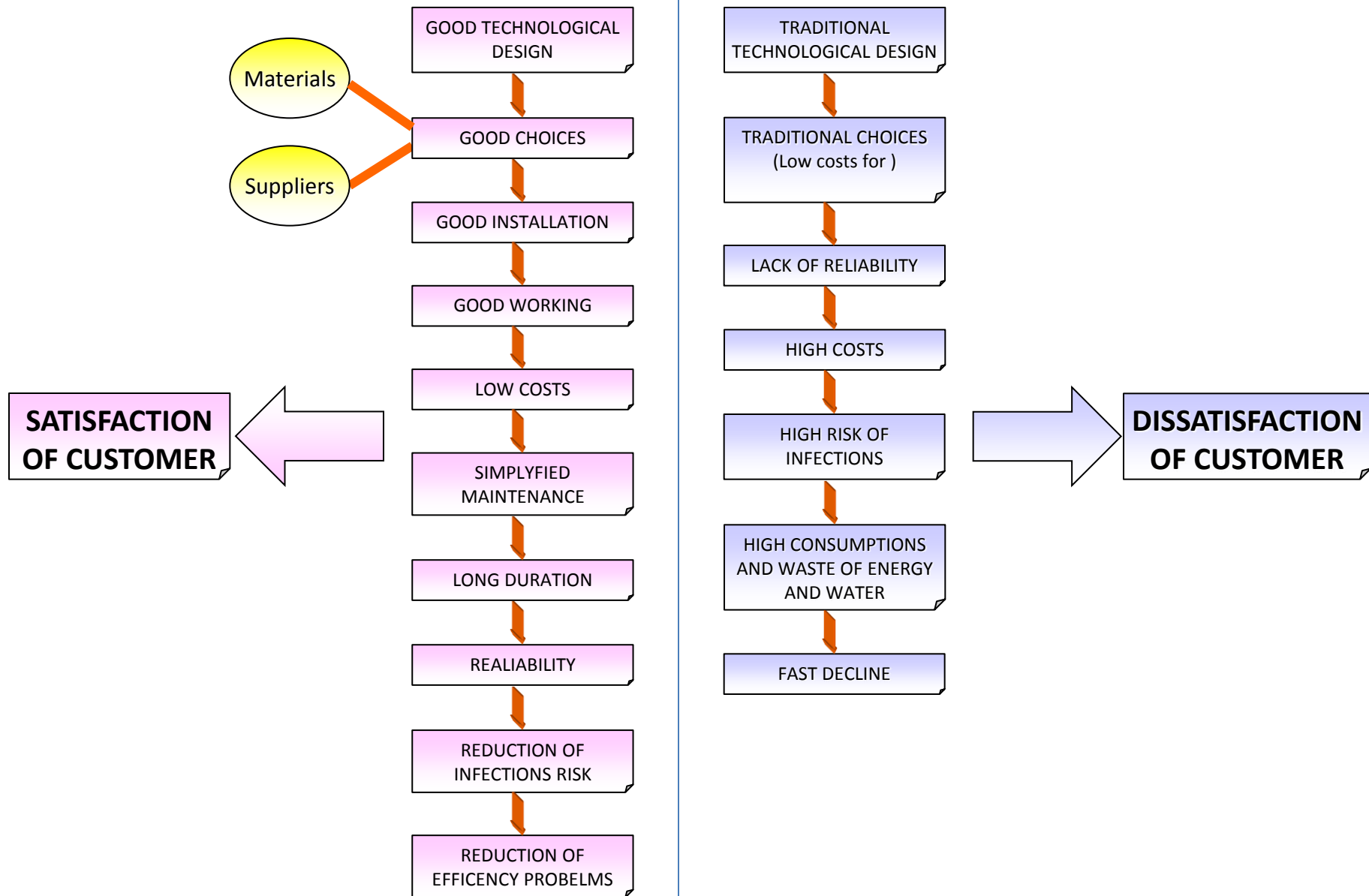


## *FEMTEC CENTER IN HULEITANG - CHINA*





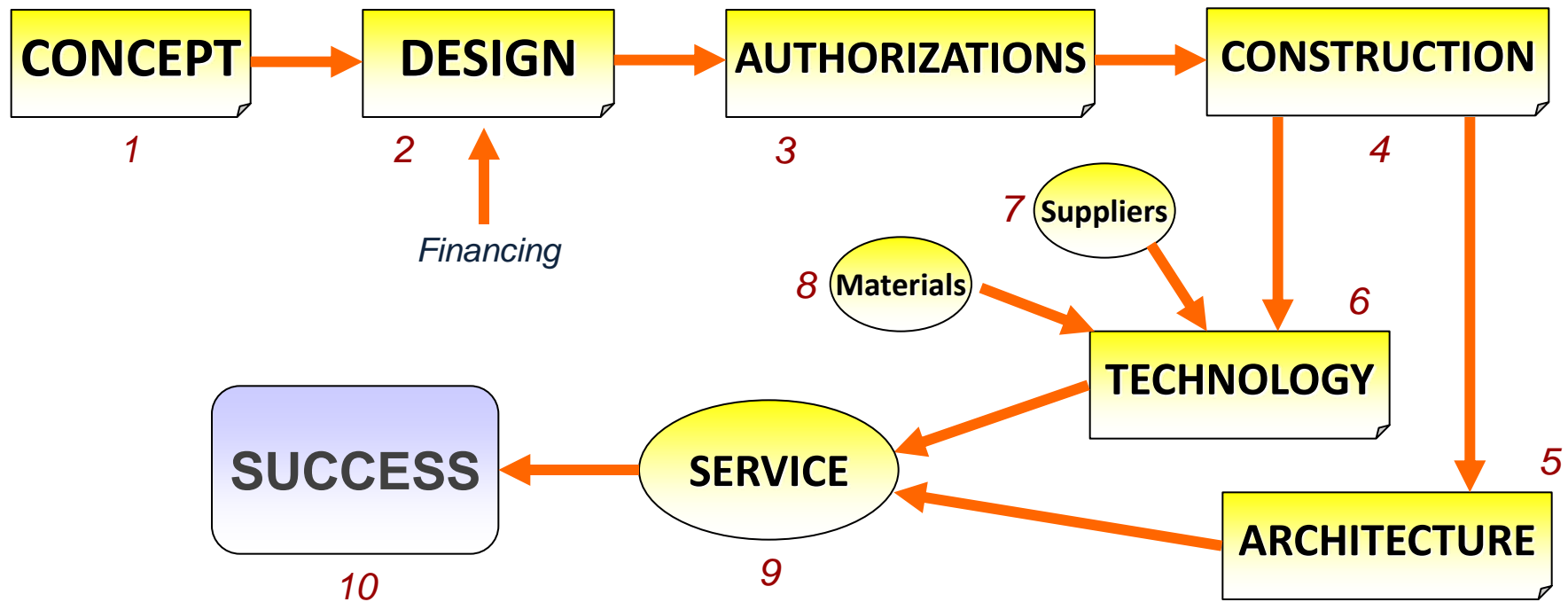
## Why technology?



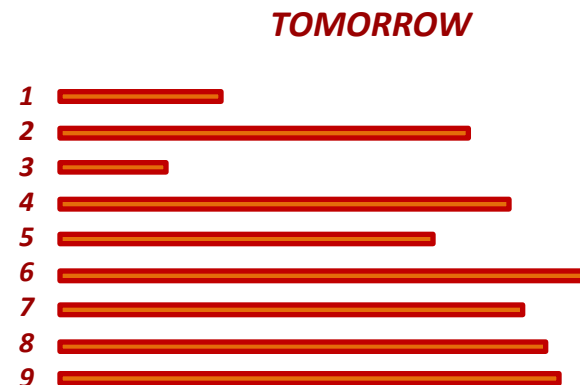
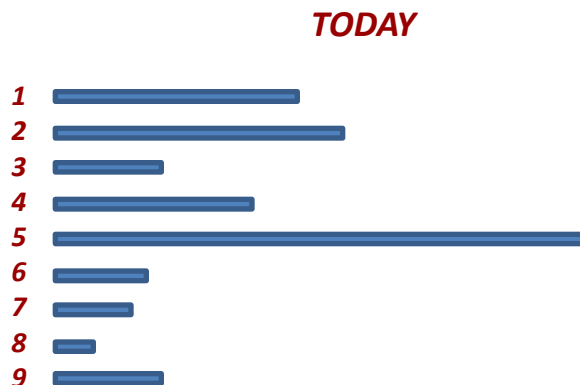




## *The importance of choices*



### *Focus points to be paid attention to*



## *HULEITANG THERMALISM'S CENTER - CHINA*





## *Teen good rules for a successful result*

**A complete and detailed project setting with realistic business plan and full knowledge of the water resource**

**Project of contents based on the offer typology**

**Choice of the best technologies suitable for the environment, taking great care of the water quality**

**Choice of the most reliable materials**

**Specification of the criteria of intervention before, during and after the construction**

.....

## *Teen good rules for a successful result*

.....

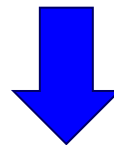
**Choice of the best design suitable for the needs  
of a correct maintenance**

**Putting devices for water saving, energy saving and  
heat recovery into the technological project**

**Installing devices for health prevention in  
water systems, aeraulic and electrical plants**

**Choice of professional staff**

**Setting the management in terms of "quality  
guarantee" for customers' health**



# **Wellness Operating Manual**





# **TERMS OF REFERENCE & STANDARD FOR HOT SPRING INDUSTRY**

By Gianni Gurnari and his staff

In collaboration with:

- BENAQUAM S.R.L.
- CHTA
- BAC Ltd.

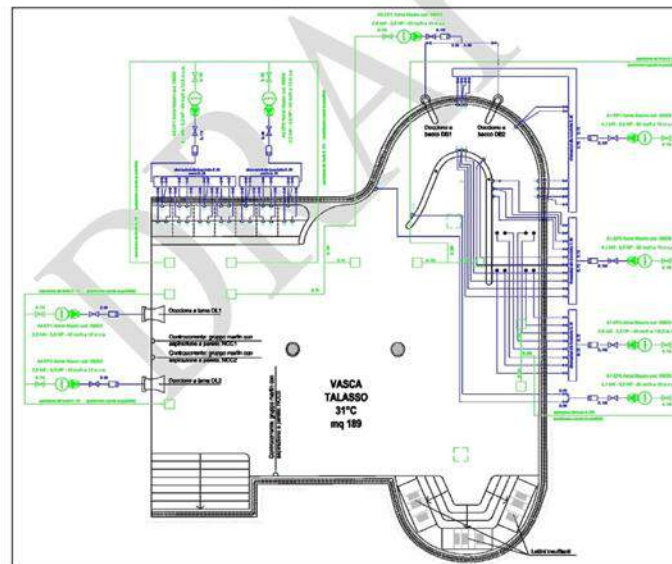
© Benaquam Srl  
All rights reserved



constitutes that percentage parts of fresh water required by law. The benchmarks for fresh water replacement are the followings:

- 30 liters per bather and in any case more than 5% of the entire volume of the pool per day
- every 6 months it's necessary to make a total replacement of the water.

Inside the pools can be also installed *water games*, such as hot whirlpools, waterfalls, air / water beds, which have plants dedicated to them usually located nearby.







- UNI 10339 (Air-conditioning systems for thermal comfort in buildings. General, classification and requirements. Offer, order and supply specifications)
- Italy, CEI norms:
  - CEI 64-8/7. Low voltage electrical installations. Part 7: Requirements for special installation or locations
  - CEI EN 60529. Degrees of protection provided by enclosures (IP code)
- Germany, DIN 19643-1 (Treatment and disinfection of water used in bathing facilities. General requirements)
- China, standards and norms:
  - GB/T 5750.2. Standard examination methods for drinking water - Collection and preservation of water samples
  - GB/T 5750.4. Standard examination methods for drinking water - Organoleptic and physical parameters
  - GB/T 8538. Methods for examination of drinking natural mineral water
  - GB 9663. Hygienic standard for hotel
  - GB 9665. Hygienic standard for public bathroom
  - GB 9666. Hygienic standard for barber shop and beauty shop
  - GB 9670. Hygienic standard for shopping center and book store
  - GB/T 11615. Geologic exploration standard of geothermal resources

# **THANK YOU FOR YOU ATTENTION!!**

[www.benaquam.com](http://www.benaquam.com)

